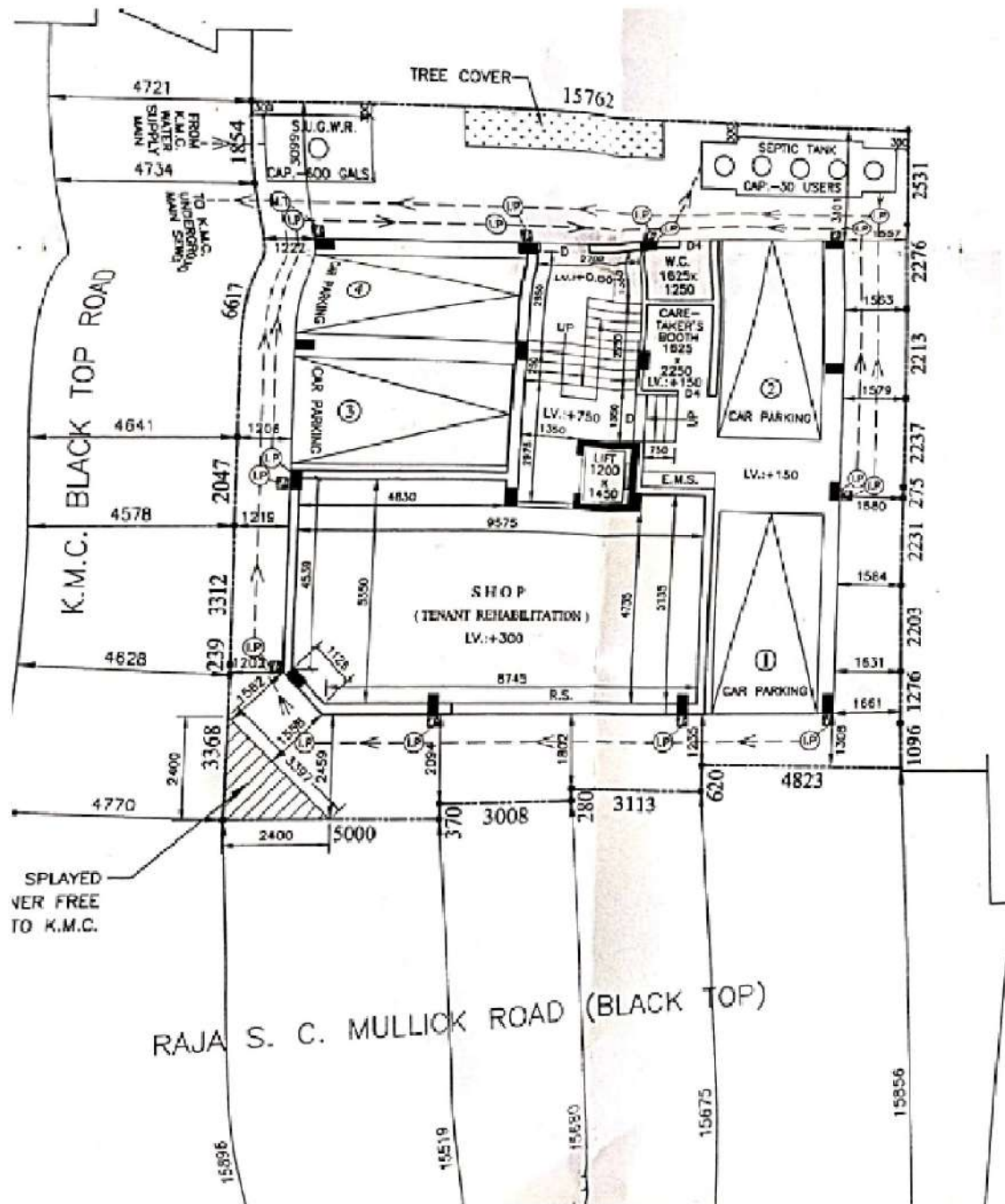


Proposed Project at Premises No-37, Roypur, Ward No-101, Borough-XII, under Kolkata Municipal Corporation, P.S.-Patuli, Kolkata-700084



SBD MERCANTILE (P) LTD.

Shyamal Chatterjee
Director

LATITUDE : 22.489649

LONGITUDE : 88.360894

SIGNATURE OF OWNER